

CABLE ROUTING AND CONNECTOR CLIPS

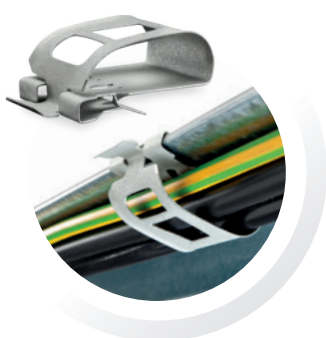
FOR PHOTOVOLTAIC ELECTRICAL CABLES



Screwless and tool-free clipped fastening solutions provide fast and simple assembly, enabling customers to reduce the overall cost of renewable energies.

Cable Routing Clips

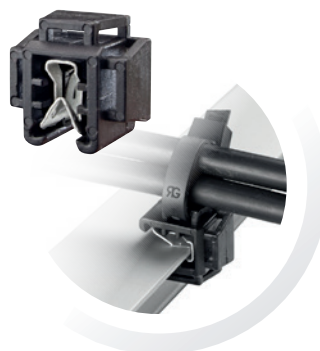
- A large scope of solutions for fixing cables and connectors over, along or on the side of module edges or rail structures, in order to improve wirings.
- Cable routing and connector clips represent easy and quick solutions for cable installations.



Multi cables parallel to the edge.
One metal piece.



Multi-directional cable routing.



Multidirectional cable routing.
Plastic contact only.



Connector parallel to the edge.
One metal piece.

Benefits

EASY TO USE

Tool free installation.

ROBUST

- Metal parts with surface treatment adapted to corrosive environments.
- Galvanic couple reduced with aluminum.
- With rolled edges to prevent damage to the sheath when pulling cables.
- Instant application achieved with the barb design.

EASE THE CABLE MAINTENANCE

Possibility to re-open the clips.

MULTIPURPOSE

- For supports with thicknesses from 0,7 to 4 mm: can fit on module edges or on structure.
- For cables 4, 6, 10 mm² section or strands.

CABLE ROUTING AND CONNECTOR CLIPS FOR PHOTOVOLTAIC ELECTRICAL CABLES

CABLE ROUTING CLIPS



	CLIPS MANAGING ONE CABLE			CLIPS MANAGING SEVERAL CABLES AND STRANDS		
ARTICLE N°	228185001	018690003	019659002	228187001	208738001: edge mounting adapter + 056476001: cable tie	236331001: edge mounting adapter + 056476001: cable tie
CABLE ORIENTATION	Parallel to the edge	Parallel to the edge with guidance adjusted to different diameters	Perpendicular to the edge	Parallel to the edge	Multi-directional	Multi-directional
EXTERNAL DIAMETERS	Max. 8 mm	4,5 to 10 mm	5,7 to 7 mm	Up to 16 mm (or 4 cables of diam. 6 mm)	With AR cable ties 3,6 x 200 mm: Strand or cables with total diam. from 6 to 50 mm max.	
THICKNESS RANGE OF THE SUPPORT (Module frame or structure)	2,25 to 2,75 mm	0,8 to 3 mm	0,7 to 2,1 mm	1,5 to 2,5 mm	1,5 to 4 mm	1,5 to 3,5 mm
POSSIBILITY TO RE-OPEN	YES	YES	YES	YES	Adapter unchanged New Cable tie	Adapter unchanged New Cable tie

CONNECTOR CLIP



ARTICLE N°	CABLE ORIENTATION	EXTERNAL DIAMETERS	THICKNESS RANGE OF THE SUPPORT	POSSIBILITY TO RE-OPEN
053842009	Parallel to the edge	17 to 22 mm	1 to 3 mm	YES

TECHNICAL SPECIFICATIONS

MATERIAL	C67S Steel - Housing & Tie: Polyamid 6.6 (black color) - RoHS compliant
SURFACE TREATMENT	Metal: combines an inorganic zinc-rich basecoat with aluminum-rich organic topcoat
CORROSION RESISTANCE	Metal / No red rust after 720 hours of neutral salt spray according to EN ISO 9227:2012

IN SITUATION



Ref. 228185001

Ref. 019659002

Ref. 228187001

Ref. 208738001
+ Ref. 056476001

Ref. 236331001
+ Ref. 056476001

Ref. 053842009

www.araymond-energies.com

ARaymond Energies SAS (RCS Grenoble 798 705 604) - ZI Technisud 123 rue Hilaire de Chardonnet - 38100 Grenoble - FRANCE has designed this datasheet. "ARaymond Network" means a network of companies which have a license of use of ARAYMOND™. This datasheet is provided for information purposes only and does not constitute an offer or an agreement. ARaymond Energies makes no warranty or representation whatsoever, express or implied, including but not limited to the accuracy, reliability, novelty, completeness, fit for a particular purpose or merchantability of the information contained in it. If you need further information, please contact ARaymond Energies.
EE-2020-0716-EN - ©Raygroup Communication. Photo Credit: ©ARaymond Network, ©Ronan Kerloch.

ARaymond 
MORE THAN FASTENING